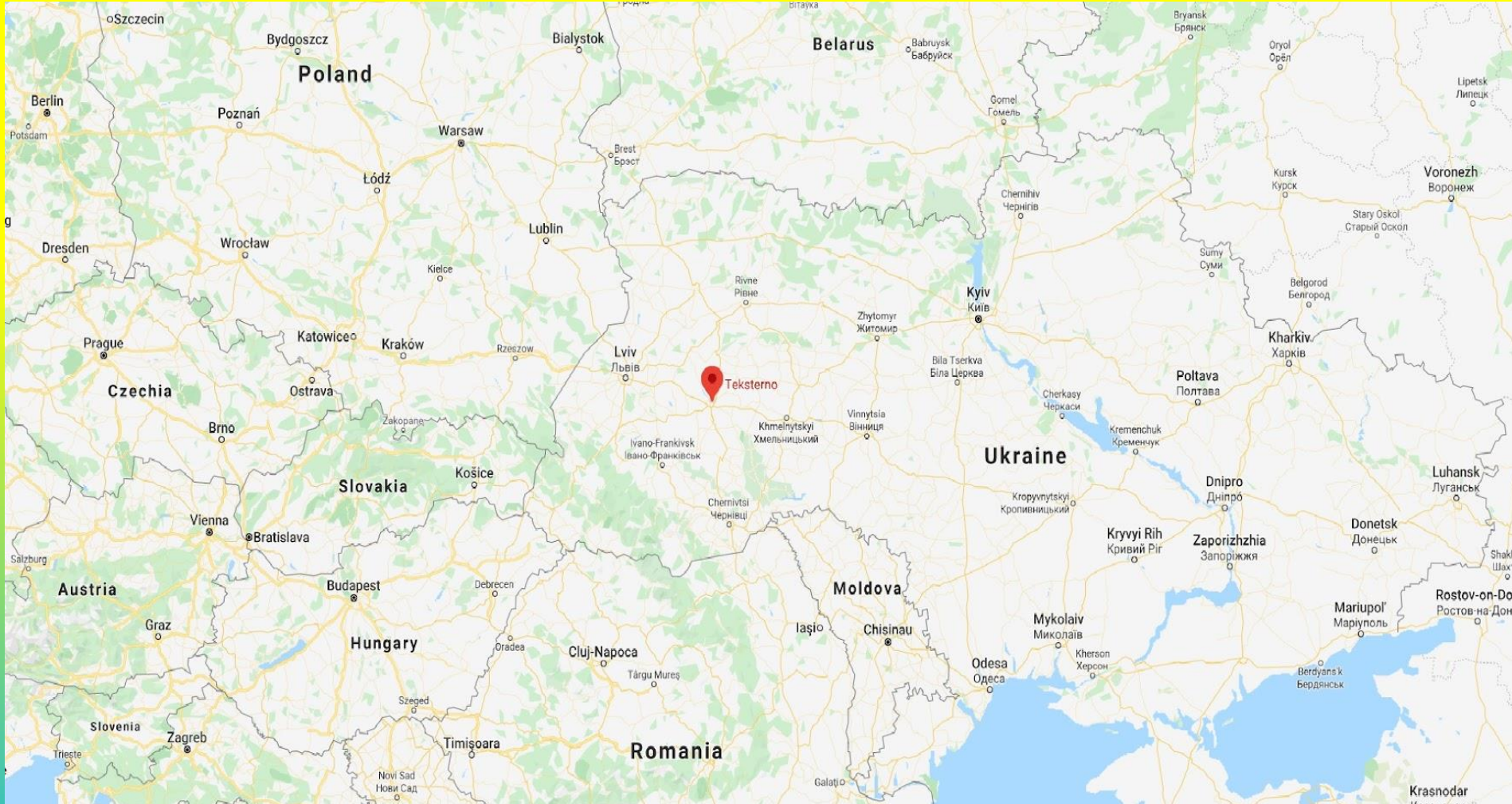
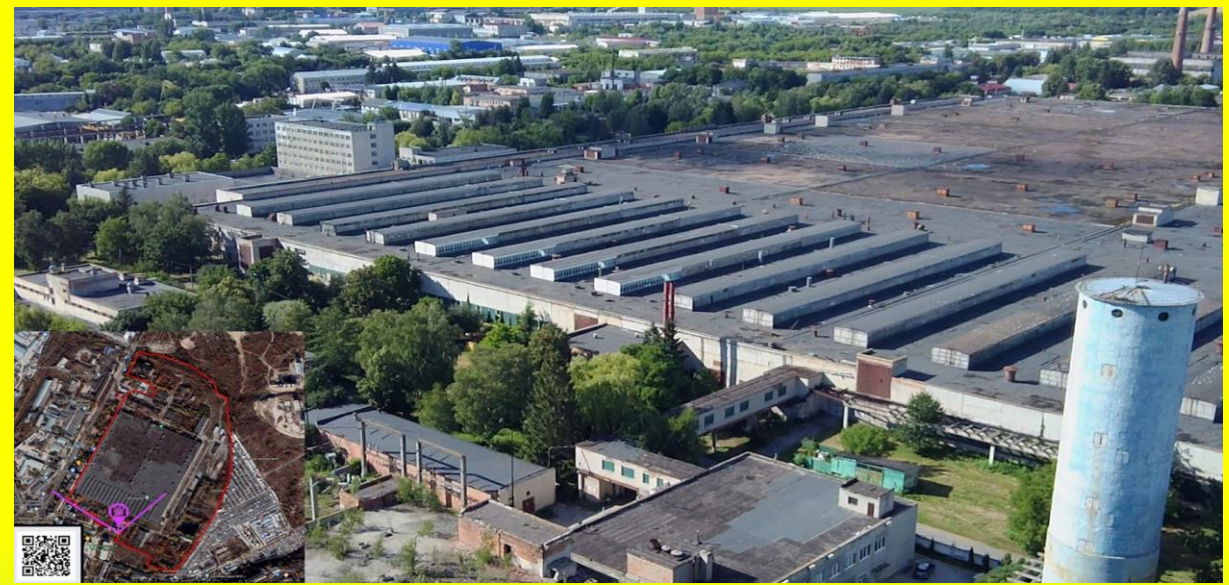


"TEXTERNO"



ASSET FOR SALE IN TERNOPIL, UKRAINE



"TEXTERNO" FACTORY

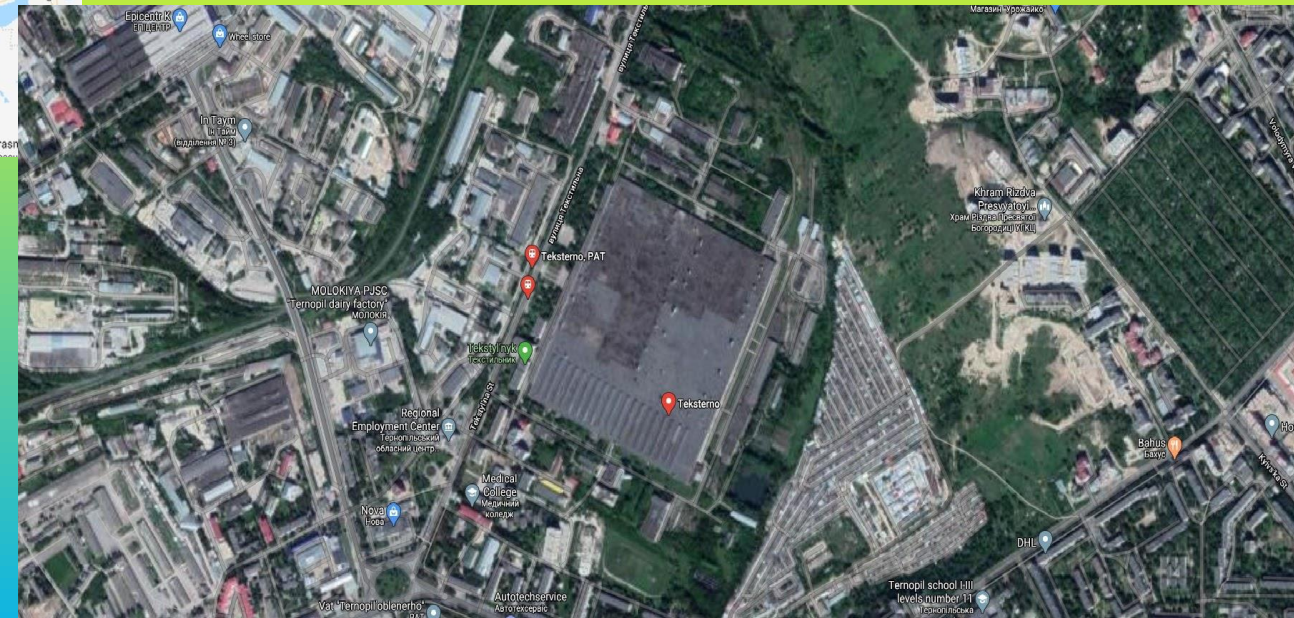
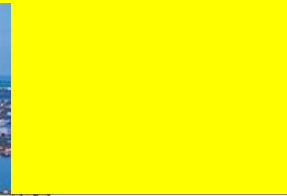
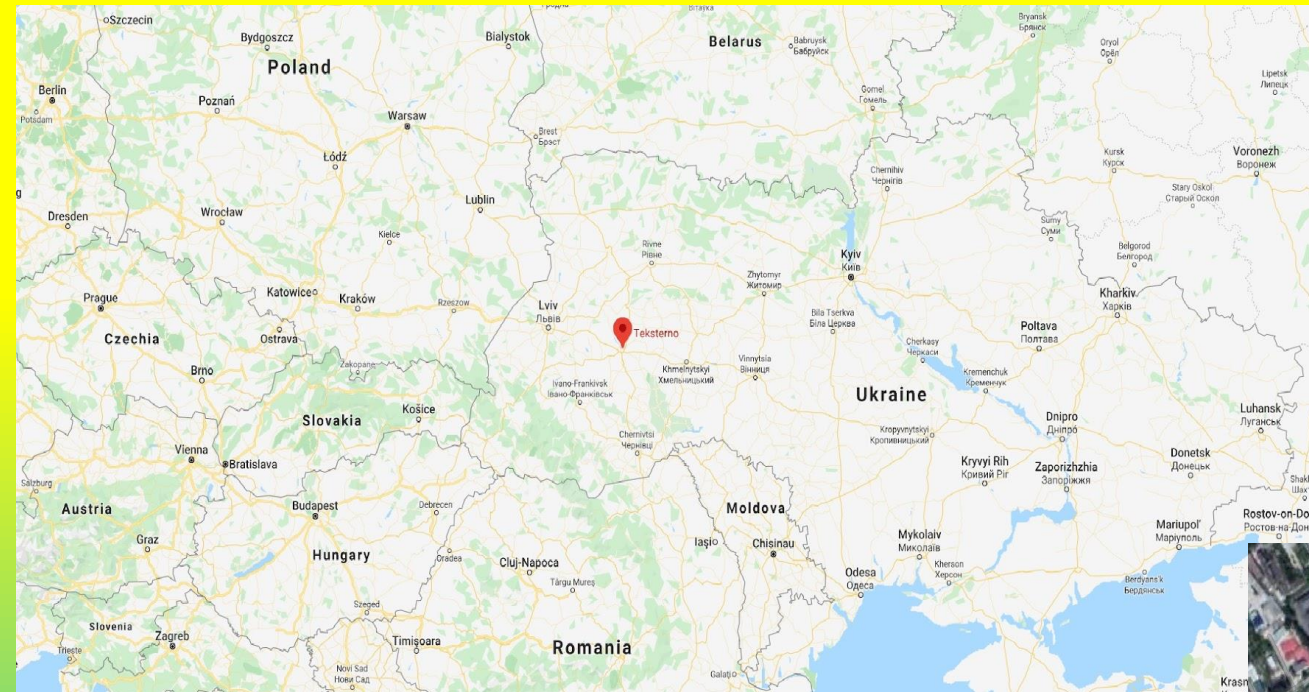




"TEXTERNO" FACTORY



"TEXTERNO" FACTORY



[illegible]

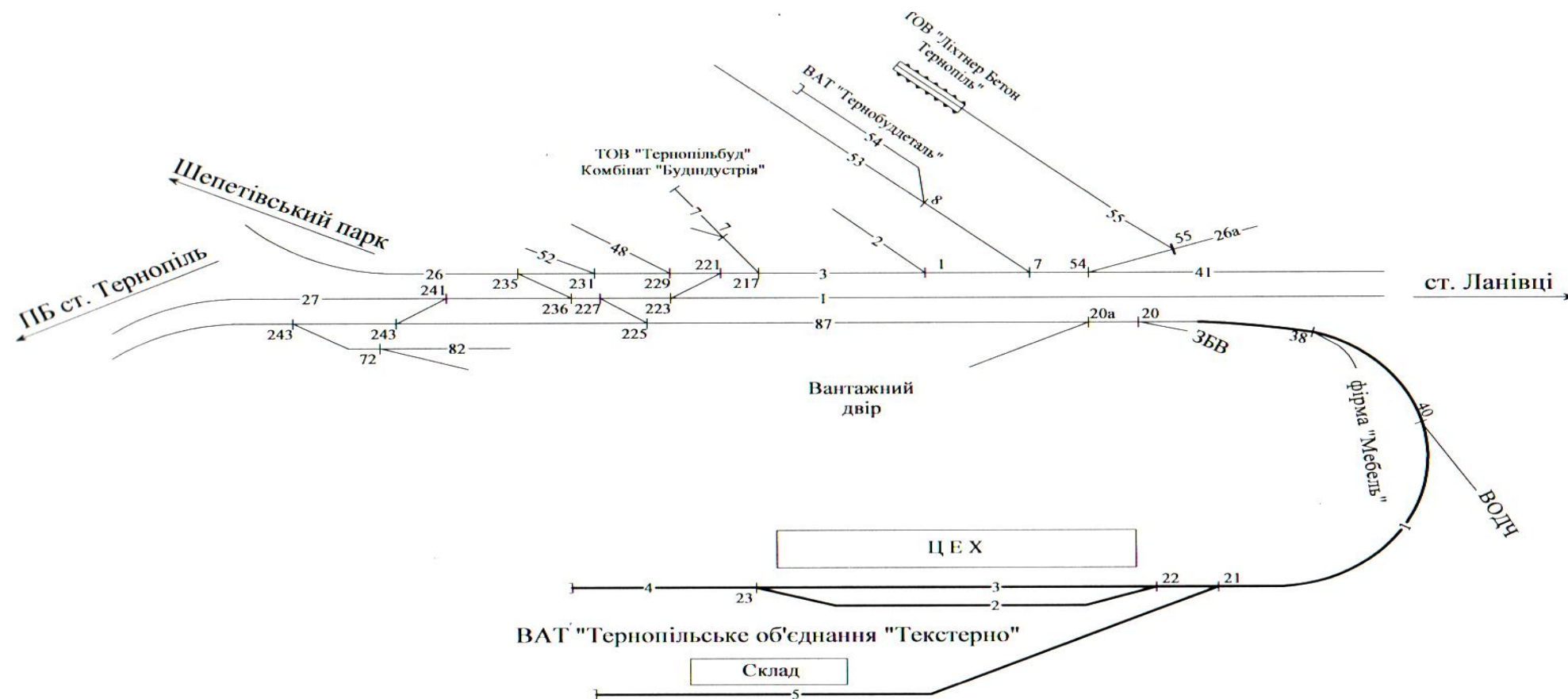
"TEXTERNO" FACTORY

<u>No</u>	<u>Name of the building</u>		<u>Number of floors</u>	<u>Area of the building</u>	<u>Total area of premises, m2</u>
1	Main production building		1	184649	200 939,3
	1a	Finishing production	1		46370,6
	1b	Weaving production	1		74056
	1c	Spinning production	1		66879
	1d	Household extension	3	5347	13633,7
2	Chemical water treatment premises in the block of pump station		1,2	1996,5	1996,5
	2a	Extention to chemical water treatment premises	1	906,5	906,5
3	Power station 110/10 kilowatt with switchboard		1	2230	2230
4	Auxiliary household building		4	5177	20708
5	Boiler room (centralized heating)		1	2676	3557,4
6	Refrigeration unit		1	2099	2099
7	Repair and construction workshops		1	3582	3582
8	Block of storages of dry and liquid chemicals		1	3427	3427
9	Administrative building (3 floors)		3	670	1956,6
10	Sport complex		2	1803	1668,4
11	Administrative building (7 floors)		7	690	4124,5
12	Other buildings			8882,16	8882,16
13	Total area			224135,16	256077,36

"TEXTERNO" FACTORY

Схема

TEXERNO" RAILWAY



"TEXTERNO" FACTORY

1. Area of buildings and road pavements

Area of premises of JSC "Texterno"- 256,07 thousands m²

Total built - up area - 224,13 thousands m²

Area of roads, sidewalks and paved areas - 62,4 thousands m²

The total land area - 530 thousands m²

The main production building - 200,9 thousands m² rectangular shaped.

Main building height - 9 m:

- main building - 6 m.

- technical floor – 3 m.

Column step: 12 × 18 m.

2. Electrical energy

Transformer substation 110/10 kV - 2 transformers $S = 6\,300 \times 2 = 12\,600$ Kilo-Volt-Amps.

Workshops substations – 18 pieces with total capacity 43 500 kW.

Length: Power lines for external lighting – 14,2 km;

- power lines for powering the substation 110/10 kW – 400 m;

- high-voltage lines on industrial area 10 kW – 8,1 km;

3. Gas

1. Medium pressure gas pipeline P-3 ÷ 6 atm. Ø159 mm.

Gas pipeline capacity Q_{max} – 5 000 m³/hour.

2. Medium pressure gas pipeline Ø159 mm Q – 7 000 m³/hour and

Medium pressure gas pipeline Ø400 mm Q – 23 000 m³/hour .

3. Gas pipeline length – 312 m.

4. Heat supply

2 boilers ST-12000 with capacity of 12 t. steam/hour each.

- gas consumption Q_{max} = 1000 m³/hour each.

5. Heating systems

For the heating system the heating module MT-7500 with capacity 7,500 Gcal/hour is installed.

For the supply of water to the heating system, the following module is installed:

4 pumps Q = 60 m³/hour and

2 additional pumps with N = 55 kW, type 6ND – 300 m³/hour each.

Module MT – 7500 can supply water to the heating system (air conditioners, supply chambers) of finishing, weaving productions (Kd 37,38, 39), spinning production (Kd 13, 14, 15, 16)

For heating office premises on III floor of 3-floor administration building are installed:

4 electrical boilers with capacity 60 kW each.

Heating line length – 7 241 m.

6. Water and sewerage

For the business needs of the mill, there are 2 wells with a capacity of 7 m³/hour.

For technical water supply, there is a pumping station of the 1st lift with a capacity on the shore of Lake Ternopil 700 m³/hour, which is supplied by 2 pipelines Ø 500 mm and with length of 2906 r.m.

Process water is supplied to two concrete reservoirs, which are located in the ground with volume of 750 m³ each, from which the water is supplied to chemical water treatment, where the pumping station of the 2nd lift is located. From the pumping station, process water is supplied to the water softening filters (softened water runs on 10 filters Ø 2500 mm by the method of Na – cationization).

Material of the filter – sulfonated coal and tar KU-1, KU-2).

To create a constant pressure in the water supply and fire extinguishing system, water is supplied to the water tower in tanks of softened fire and mixed water V = 300 m³ each and the tank of drinking water V = 150 m³. For drainage, there is a separate sewerage system, 2 strands of domestic sewage Ø 600 mm and Ø 700 mm and one strand Ø 1000 mm of industrial sewage.

Aeration tank mixer is located on the industrial sewerage line with V = 10 000 m³, wherein drains are mixing, leveling the concentration and bringing it to acceptable standards, as well as partially undergo aeration.

There is also a separate rainwater drainage system Ø 500 – 1000 mm, on which rain water from the roof of industrial and domestic buildings, as well as from the asphalt roads and areas of the piping system, it flows into a rainwater drainage, where it settles and merges into the city rain sewer.

Rainwater reservoir with area of 10 000 m² and V = 20 000 m³ acts as a buffer and in case of fire, water from it can be used for fire fighting.

In state water cadastre there is a separate fire extinguishing system equipped with sprinkler heads with a processing temperature + 72°C.

Pipeline length for process water – 9 300 m;

Pipeline length for drinking water – 4 370 m.

7. Charging station

There are alkaline and acid charging stations where rectifier charging units are installed:

in alkaline charging station - 10 pcs. and in acid charging station - 5 pcs.

8. Railway

Railway of JSC «Texterno» adjoins to railway switch №20 to the connecting railway № 87 on the distance 2253,9 m from the axis of station Ternopil. The railway of JSC «Texterno» part, to the boundary of the column transfer № 20 («driveway border») with the total length of 37,0 m, and also railway switch № 40 from the joint of frame rails and the railway Division of Water Supply and Sewers – 1 is on the balance of «Ternopil distance railway». (Maintenance section – 8)

The border of rail access road – the sign «The border of rail access road» is mounted near the boundary column №20.

Total length of the railway 2647,5 m.

Width – 1520 mm

Length - 2647,5

In particular:

- Maintenance section – 8 - 67,8 m

- JSC «Texterno» - 2579,7 m